



**PMP**  
Europe Ltd

Golf Club  
Partnership Scheme

Direct Purchasing for Sustainable Surfacing

**flexipave**



**flexipave**

Call 01226 447292 or email [info@pmpeurope.co.uk](mailto:info@pmpeurope.co.uk)

## About the scheme

The PMP Europe Golf Club Partnership is a three-tier scheme designed to help golf clubs improve their pathways using the unique Flexipave porous surfacing system.

### Level 1 – Self-Sufficient Installation

Your staff will be trained in how to prepare, mix and install the Flexipave surfacing. Once your team is trained, you simply purchase the Flexipave raw materials from PMP Europe as and when you need it.

- Greater flexibility on the quantities of material you wish to install.
- Reduces installation lead times, and reduces the cost of installing the material by allowing you to utilise your own workforce.
- Orders are delivered on pallets and are prepared in our warehouse to give you the correct quantities and ratios required.
- Use your own course management team to deliver stunning, water free paths that will transform your course.

### Level 2 – Supported Installation

Your club orders the material required for the project, and PMP Europe sends two qualified installers to conduct the installation. Flexipave requires a team of 4 people to install, so the golf club supplies two members of its team to support the PMP Europe installers. Level 2 requires no advance training of your staff, as they will be guided by the two PMP Europe installers.

### Level 3 – Full-Service Installation

A complete turn-key solution. PMP Europe measures the project, orders the material, and fully coordinates the installation by supplying a full on-site team of installers. We can also plot a phased programme of works over a number of years to suit the long-term ambitions of the club, helping you to budget and plan your development.

## Hardware and Site Support

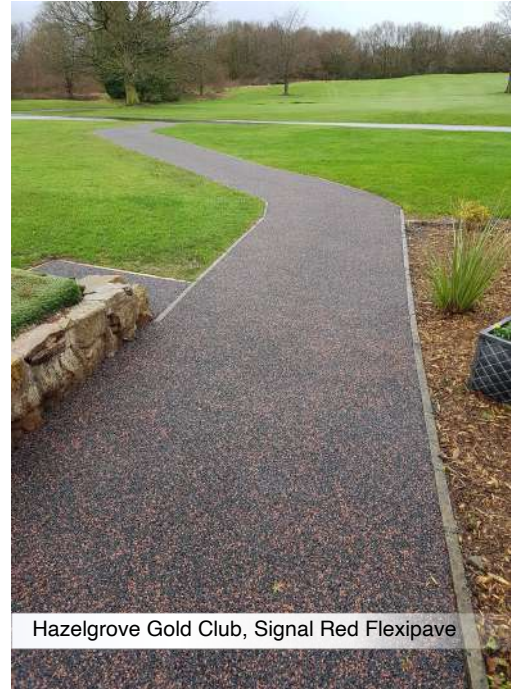
For clubs looking to join our Level 1 scheme, PMP Europe can supply equipment like specialist mixers on a short, medium or long-term hire basis, reducing the capital outlay required to get up and running. PMP Europe can also supply other elements like hand-trowels, plastic barrows, branded PPE and other installation related items, reducing the hassle of having to source from multiple retailers.

**Call 01226 447292 or email [info@pmpeurope.co.uk](mailto:info@pmpeurope.co.uk)**





Training the greenkeepers at Whitley Bay GC



Hazelgrove Gold Club, Signal Red Flexipave



Quieter, safer incline access at Whitley Bay GC



1<sup>st</sup> tee, Murrayfield Golf Club, Edinburgh



## What is Flexipave?

**Flexipave** is a mixture of loose ground rubber (derived from recycled vehicle tyres) and stone aggregate. The loose material is mixed onsite with our unique polyurethane binder and installed by hand. The combination of rubber within the material and our unique binder gives the finished surface a dynamic flexibility that would be impossible to achieve with traditional hard materials.

**Flexipave** is installed by hand to achieve the required depth. The thickness of the finished surface depends on how the finished surface will be used, but our engineers work closely with clients to identify the best solution for the project.

The finished surface is:

- ✓ Highly porous - Allows water and air to flow through the material in high volumes.
- ✓ Dynamic – The unique polyurethane binder allows the finished surfaces to gently flex, giving them the ability to adjust to different temperatures and conditions without cracking.
- ✓ Adaptable – Flexipave can be installed over existing hard surfaces, but can also be installed on to simple stone sub-bases without the need to lay costly engineered sub-layers.

## The benefits of using Flexipave around trees

Trees play a critical part of the landscape of many golf courses. Although there are many factors involved in healthy tree growth, some of the key ones are:

- Root access to water and air.
- Unrestricted root growth.
- Protection from soil compaction.
- Protection of roots from extremes of temperatures.
- Maintenance work.

Using **Flexipave** around trees helps with these factors because:

- Its porosity allows water and air to easily reach the roots and prevents problems of standing water and waterlogging.
- Its flexibility allows the roots to expand and grow under the Flexipave without restriction, and without damaging the surface by causing cracking, lifted paving or tripping hazards.
- It prevents the soil becoming compacted due to foot traffic or vehicle overrun and will not crack due to ground subsidence or vehicle overrun.
- Rubber is a poor conductor of heat or cold. Flexipave helps to imitate the natural insulating qualities of mulch and fallen vegetation found on the woodland floor, therefore protecting the roots from extremes of cold and heat especially in urban areas.
- Flexipave can also be used as a footpath or hard surface material. The benefits of using it as a tree surround can therefore be expanded to the whole footpath or verge.
- Maintenance work. As Flexipave is a low-maintenance system, the frequency and cost of maintenance and repairs is minimal, and the risk of tripping is virtually eliminated.



Flexipave training at Whitley Bay GC



Flexipave is completely porous, allowing water to drain directly through pathways



Bloxwich Golf Club 2012, buggy friendly Flexipave paths



Crossing the burn at Murrayfield Golf Club

## Partner Testimonials

*We were looking for a long-term solution to path surfacing at our Golf Club and initially in one area which, as well as having a steep gradient, was very prone to flooding and was dangerous underfoot in winter months.*

*The Flexipave product installed by PMP provided a solution beyond our expectations. The durability, aesthetic finish and weatherproof qualities have promoted us to create a long-term plan to replace all course paths with Flexipave.*

*Very well received by both our members and team alike, we quickly developed an ambition to commit to installation training and now have a full team of staff who are qualified to lay this surface.*

*The input from the PMP representatives - from sales to installation - has been invaluable, and we have developed a long-standing relationship which we hope will be mutually beneficial for many years to come.*

**Layla Levy, General Manager, Whitley Bay Golf Club**

*I first introduced my Board of Directors at the club I managed, Bloxwich Golf Club, to the capabilities of Flexipave in late 2009. Following extensive research into the product which aimed to justify its suitability to the golf environment, a decision was taken by the board to progressively replace various notoriously wet course pathways.*

*The implementation started in 2010-11, with an extensive pathway between the clubhouse and the first tee. Historically this was exceptionally bad during wet winter months, and also negatively impacted first impressions for club visitors. In addition, a buggy return pathway from the 18th green that runs alongside the 10th tee was included, along with a special area in a nearby gateway between the course and the main car park. These pathways had a very significant impact on both member and visitor satisfaction, and formed the basis for the decision to extend the network to other problem areas of the paths network. I retired in 2014, but the installations continued thereafter.*

*Fast forward to 2021 and I visited the club to play in an Open competition, and was very impressed with the sustainability of the Flexipave product, some of which by then had been in situ for over 10 years. Apart from some natural fading of the product, all the paths had survived remarkably well; I was particularly impressed in areas where the edging soil had eroded, where the edge of the Flexipave was fully intact and in as good a condition as the day it was laid. I took the opportunity after my round to chat to members of the greens staff, who expressed their wholehearted support for the product, especially since their only commitment to its maintenance was the occasional spray with weedkiller!*

*I remain proud of my work in sourcing this product, the commitment of the club to install it, and the positive contribution it has had to members and guests alike, in their enjoyment of the glorious game.*

**Rob Wormstone, Retired Secretary/Manager - Bloxwich Golf Club Ltd. (2004 – 2014)**



# Traditional surfacing systems vs Flexipave

## Concrete

- ✗ Hard on Shoes with Spikes
- ✗ Slippery on a slope in dry, wet and icy
- ✗ Any salt washed off quickly and will require regularly resalting
- ✗ Noisy when walking on
- ✗ Breaks in heavy frost and can cause trip hazards
- ✗ Not porous so water runs off and causes erosion
- ✗ Not sustainable

## Tarmac

- ✗ Hard on shoes with spikes
- ✗ Slippery on a slope in dry and wet and icy
- ✗ Any salt washed off quickly and will require regularly resalting
- ✗ Breaks up in heavy frost and can cause trip hazards
- ✗ Not porous so water runs off and causes erosion
- ✗ Not sustainable

## Artificial Grass

- ✗ Easily damaged by spikes if laid on to hardcore
- ✗ Can leave standing water
- ✗ Can deteriorate very quickly
- ✗ Slippery when icy
- ✗ Can be damaged by weed killer chemicals
- ✗ Not sustainable

## Compacted Stone, Shale and loose stone

- ✗ Not porous so water runs off and causes erosion
- ✗ Erosion will cause uneven surface and trip hazards
- ✗ Ongoing maintenance
- ✗ Dirty
- ✗ Unsightly
- ✗ Loose material gets onto fairways and greens causing damage to machinery and greens
- ✗ Not sustainable

## Flexipave

- ✓ Porous – no standing water on paths.
- ✓ No standing water = no sheet ice in winter.
- ✓ Better grip due to rubber content within material.
- ✓ Quiet – Players teeing off not disturbed by other groups ‘crunching’ past.
- ✓ Sustainable – 50% of the surface is recycled rubber from old tyres.
- ✓ Self supporting edges means grass can recover right to the path.
- ✓ Highly presentable, creating a better-looking course.
- ✓ Low-maintenance, freeing time for the greenkeepers and course team.



This brochure has been produced  
within the generous cooperation of  
Whitley Bay Golf Club



**PMP**   
Europe Ltd

Golf Club  
Partnership Scheme  
Direct Purchasing for Sustainable Surfacing

 flexipave

Call 01226 447292 or email [info@pmpeurope.co.uk](mailto:info@pmpeurope.co.uk)